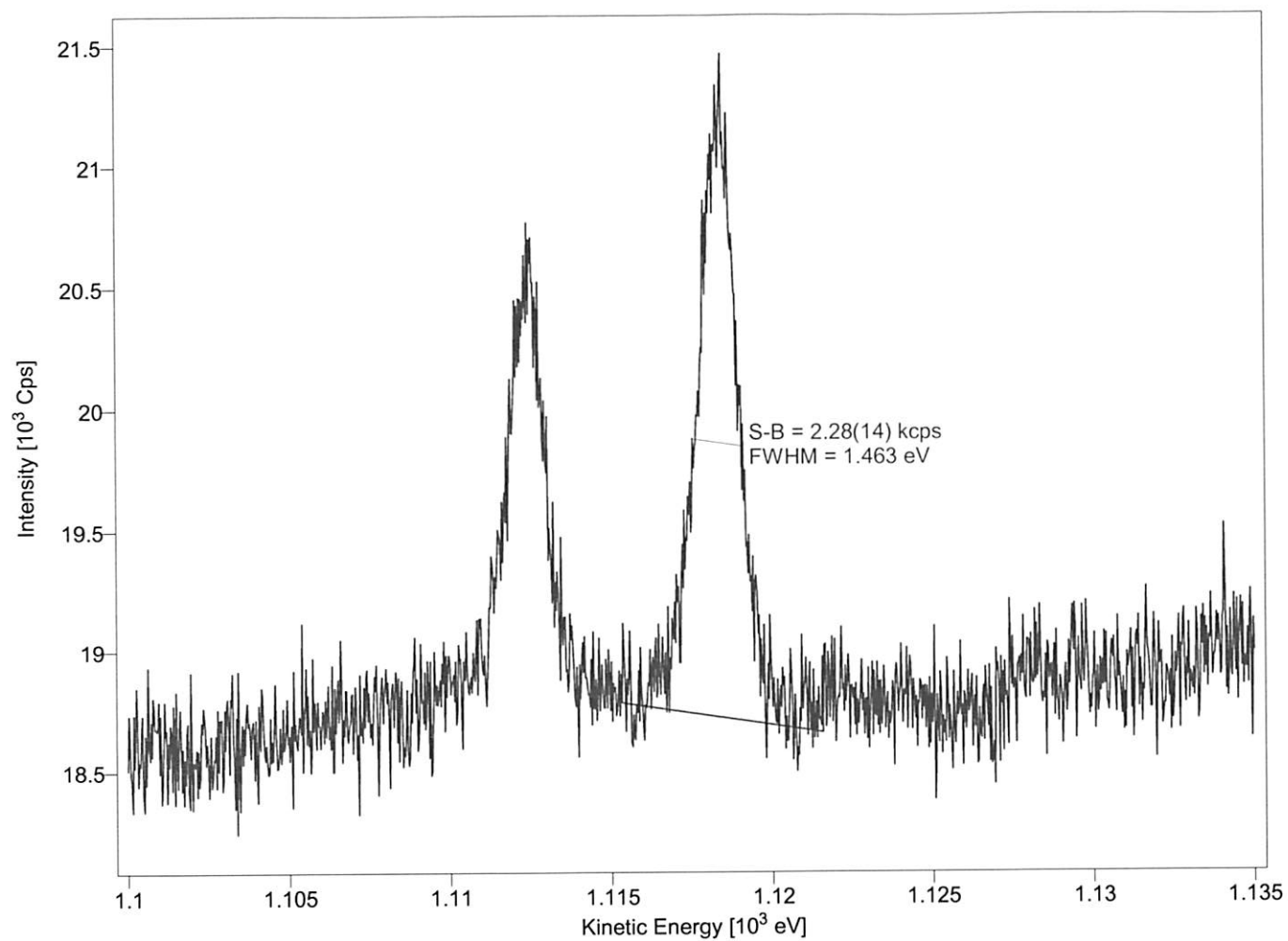


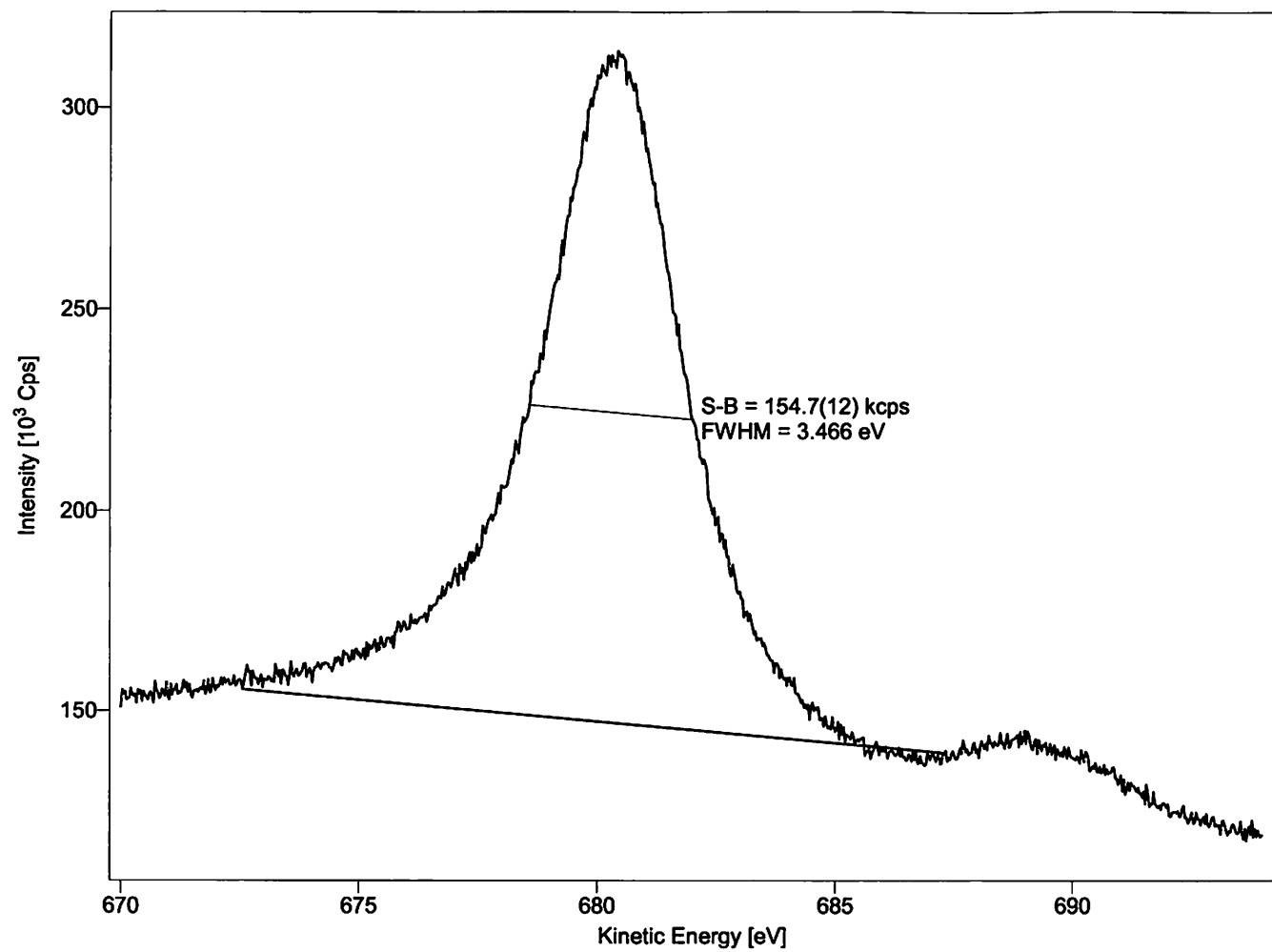
K:\Spezifikation\XR50\2008\XR 50 257.08.01 3.xml

Group	Region	Method	Lens	Slit	Mode	Scans	Dwell	Delta	E _{exc}	E _{kin}	E _{pass}	U _{bias}	U _{det}	Comment
Epass=20eV	1 - Ag 3d, Mg-Kalpha	XPS	LA	5:7x20\2:open	FAT	1	0.1	0.03	1486.6	870 .. 905.01	20	90	2800	Mg 155nA; 2,59A ;300W;kV15 XRC 1000 229-09.02



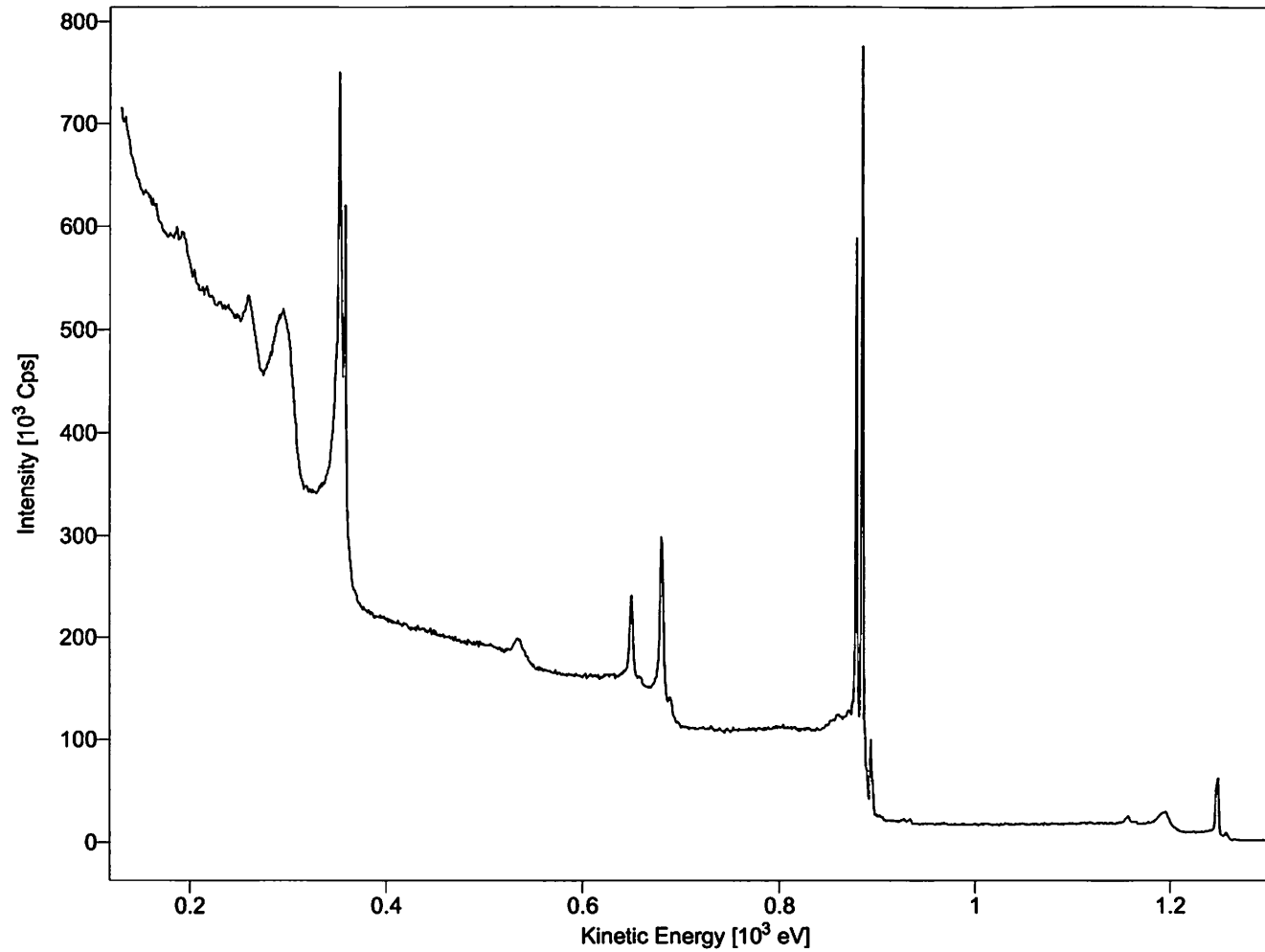
K:\Spezifikation\XR50\2008\XR 50 257.08.01 3.xml

Group	Region	Method	Lens	Slit	Mode	Scans	Dwell	Delta	E _{exc}	E _{kin}	E _{pass}	U _{bias}	U _{det}	Comment
Epass=20eV	2 - Ag3d, Al-Kalpha crosstalk	XPS	LA	5:7x20\2:open	FAT	10	0.1	0.03	1253.6	1100 .. 1135	20	90	2800	



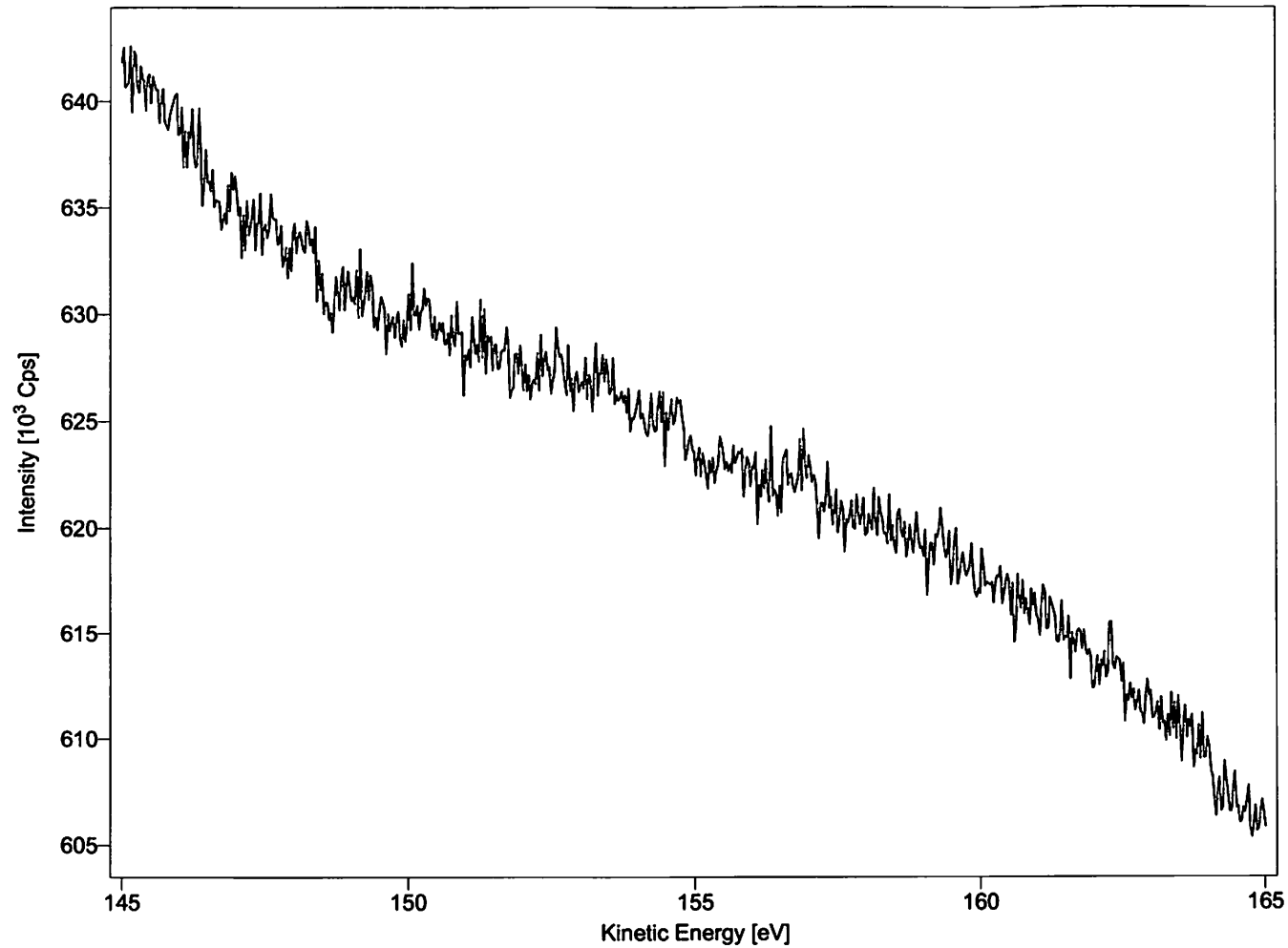
K:\Spezifikation\XR50\2008\XR 50 257.08.01 3.xml

Group	Region	Method	Lens	Slit	Mode	Scans	Dwell	Delta	E _{exc}	E _{kin}	E _{pass}	U _{bias}	U _{det}	Comment
E _{pass} =20eV	3 - Ap3p3/2, Mg-Kalpha	XPS	LA	5:7x20\2:open	FAT	1	0.1	0.03	1253.6	670 .. 694	20	90	2800	



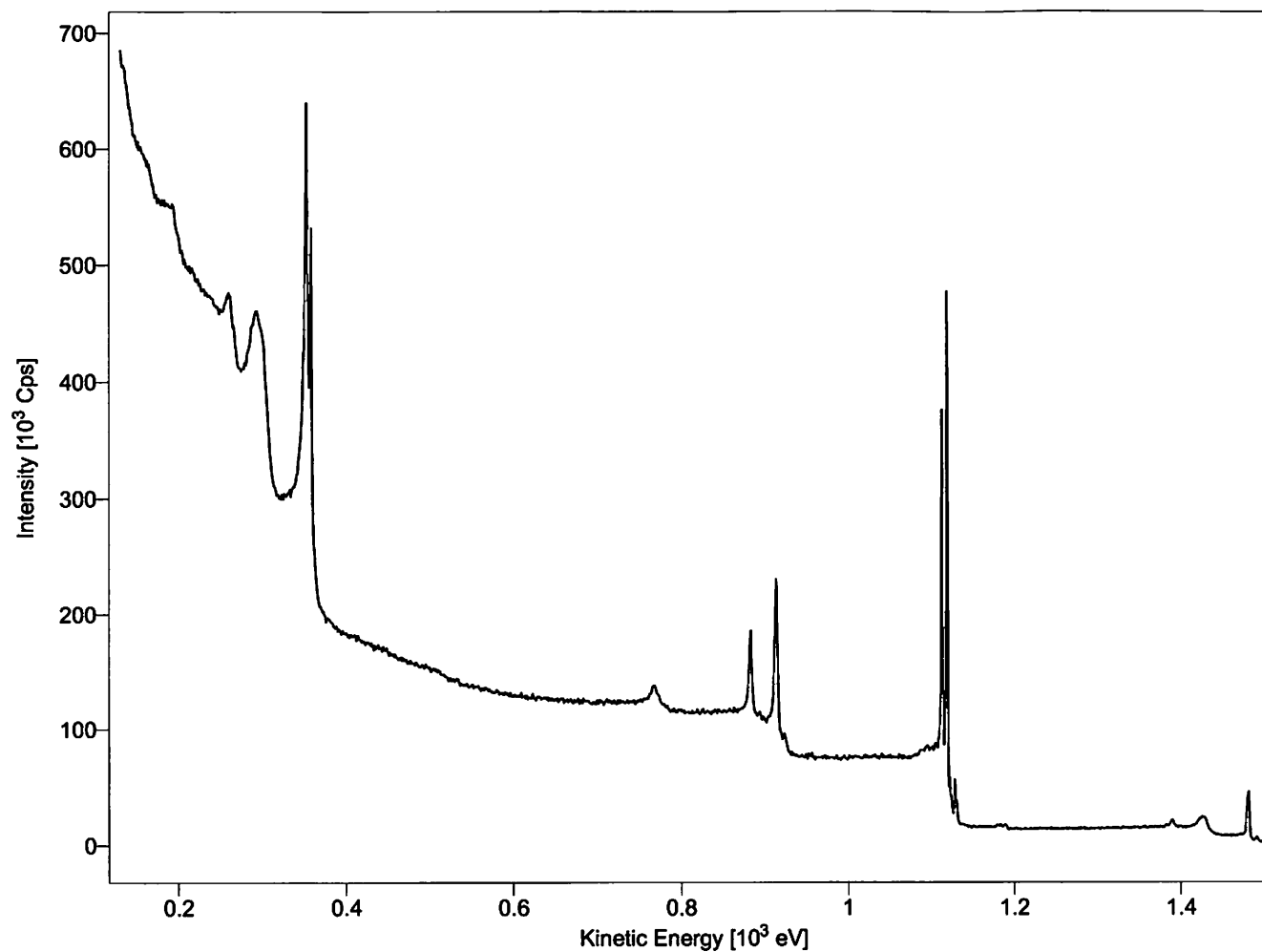
K:\Spezifikation\XR50\2008\XR 50 257.08.01 3.xml

Group	Region	Method	Lens	Slit	Mode	Scans	Dwell	Delta	E _{exc}	E _{kin}	E _{pass}	U _{bias}	U _{det}	Comment
E _{pass} =20eV	4 - Ag survey, Mg-Kalpha	XPS	LA	5:7x20\2:open	FAT	1	0.1	1	1253.6	130 .. 1300	20	90	2800	Mg 155nA; 2,59A ;300W;kV15 Mg 141nA;2,68A;300V



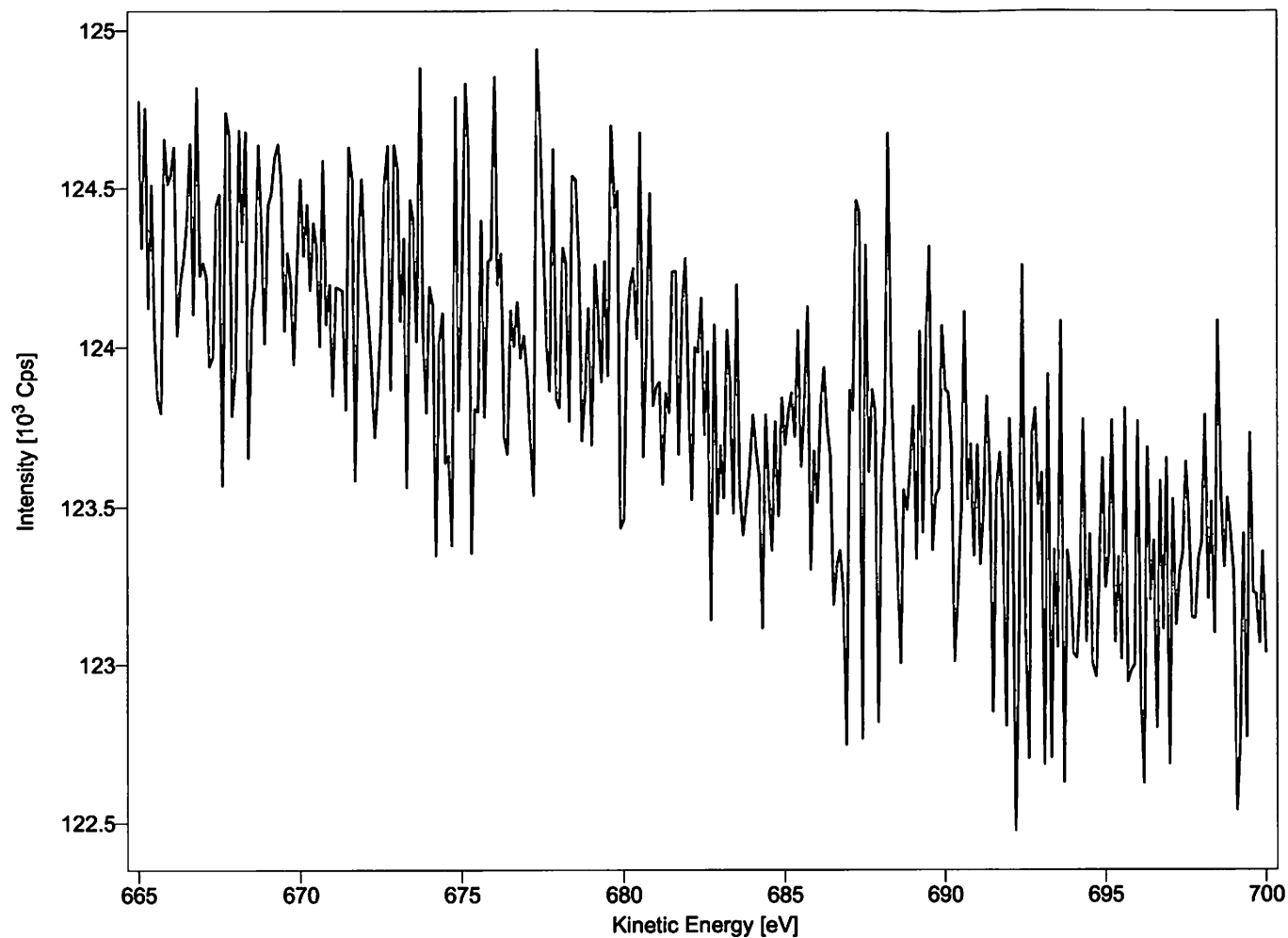
K:\Spezifikation\XR50\2008\XR 50 257.08.01 3.xml

Group	Region	Method	Lens	Slit	Mode	Scans	Dwell	Delta	E _{exc}	E _{kin}	E _{pass}	U _{bias}	U _{det}	Comment
Epass=20eV	5 - Ag3d, O-Kalpha (Mg side)	XPS	LA	5:7x20\2:open	FAT	10	0.1	0.03	1253.6	145 .. 165.01	20	90	2800	



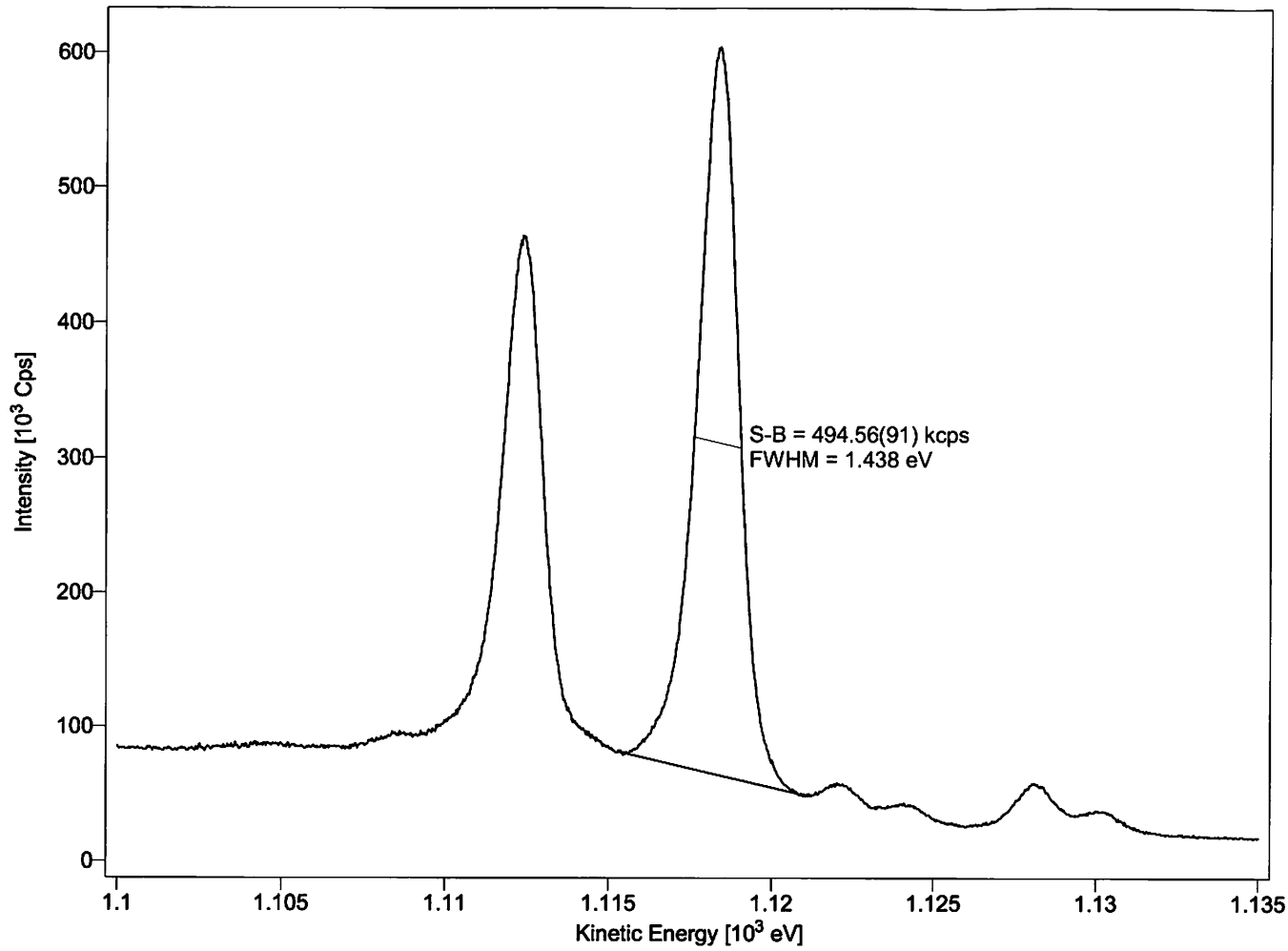
K:\Spezifikation\XR50\2008\XR 50 257.08.01 3.xml

Group	Region	Method	Lens	Slit	Mode	Scans	Dwell	Delta	E _{exc}	E _{kin}	E _{pass}	U _{bias}	U _{det}	Comment
Epass=20eV	6 - Ag survey, Al-Kalpha	XPS	LA	5:7x20\2:open	FAT	1	0.1	1	1486.6	130 .. 1500	20	90	2800	Al 151nA;300W,2,61A;15kV □ 128nA;300W;2,71A;1



K:\Spezifikation\XR50\2008\XR 50 257.08.01 3.xml

Group	Region	Method	Lens	Slit	Mode	Scans	Dwell	Delta	E _{exc}	E _{kin}	E _{pass}	U _{bias}	U _{det}	Comment
Epass=20eV	7 - Ap3p3/2, Mg-Kalpha crosstalk	XPS	LA	5:7x20\2:open	FAT	10	0.1	0.1	1486.6	665 .. 700	20	90	2800	



K:\Spezifikation\XR50\2008\XR 50 257.08.01 3.xml

Group	Region	Method	Lens	Slit	Mode	Scans	Dwell	Delta	E _{exc}	E _{kin}	E _{pass}	U _{bias}	U _{det}	Comment
Epass=20eV	8 - Ag 3d, Al-Kalpha	XPS	LA	5:7x20\2:open	FAT	1	0.1	0.03	1486.6	1100 .. 1135	20	90	2800	Al 149nA;300W,2,61A;15kV